


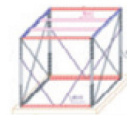
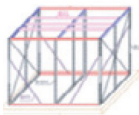


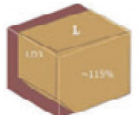
# Shipping Garments on Hangers (GoH)

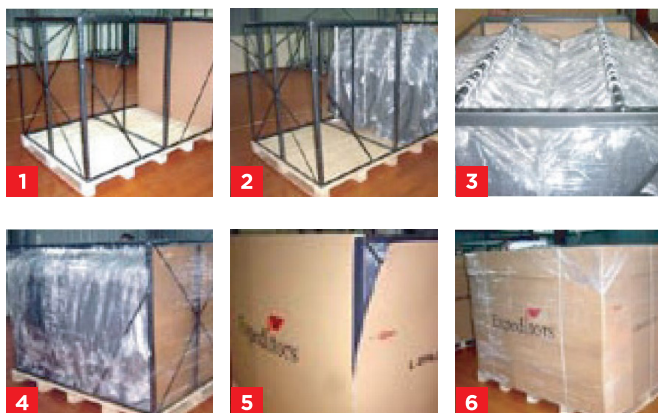
At Expeditors, we create innovative solutions to cater to increasing and changing customer demands. The Garment on Hanger (GoH) program is just one of these solutions which supports the supply chain for fashion retailers in particular. Expeditors' Constructed Units program was specifically designed with the purpose of shipping garments on hangers in a way that is both secure and cost effective by any mode – road, air, ocean, or sea+air.

Expeditors Constructed Units are comprised of rigid steel frames with bars secured to the pallet. After the garments are hung, the frame is shrink wrapped to prevent moisture penetration. A cardboard wall and top are then placed over the frame which is shrink wrapped for a second time and banded to secure the garments. The secured unit is then ready for shipment via road, air, ocean, or sea+air services, thereby reducing garment touch points, improving garment integrity, supply chain velocity, and loading flexibility.

Expeditors' Constructed Units are available in (minimum) three sizes: small, medium and large. The number and variety of sizes used for each shipment is matched to the quantity of garments, which in turn minimizes transportation cost. The Constructed Units program is not intended as a replacement of the current Carrier GoH process; however, it complements carriers' loading equipment especially with multi-modal shipments and smaller shipments.

## GoH TECHNICAL SPECIFICATIONS

Equipment Size	S	M	L
Outer Dimensions	108x80x158 cm	153x105x158 cm	209x153x158 cm
Volume	1.37 cbm	2.54 cbm	5.05 cbm
Pivot	228 kg	424 kg	844 kg
Technical Drawing			
Loadability % LD3			



## Why GoH Shippers use Expeditors' Constructed Units:

- Availability of GoH shipping packaging in key global locations, which protects the garment, sales margin and the customer's brand
- Garment integrity; lower fall-off rate, reduced crushing and greater protection of the garment during transportation
- Increased security and reduced pilferage
- Supports all modes of transportation
- Shorter lead times through reduced touch points and handling efficiency
- Cost-effective; safe and secure consolidation of garments on hangers with boxed merchandise and flexible capacity

In addition to Expeditors' Constructed Units packaging, we also provide GoH shipping services using ocean containers rigged for hanging garments as well as airline ULDs.